

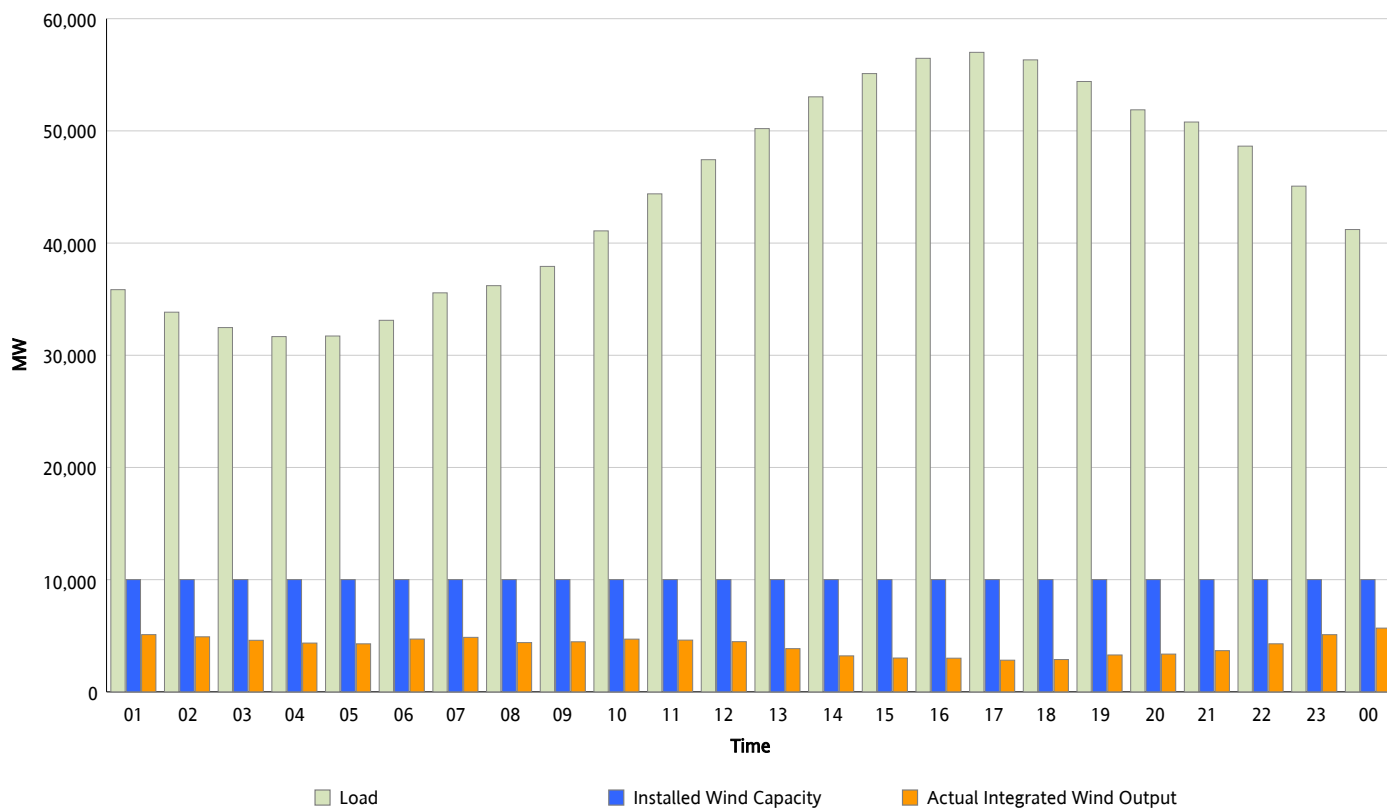


ERCOT Grid Operations

Wind Integration Report : 08/23/2012

Peak Load	57,000 MW
Load Peak Hour (HE)	17
Wind Over Peak	2,827 MW
Wind Record 06/19/12	8,368 MW
Max Wind Value*	5,985 MW
Wind Peak Time	23:59
Wind Integration %	15.14 %

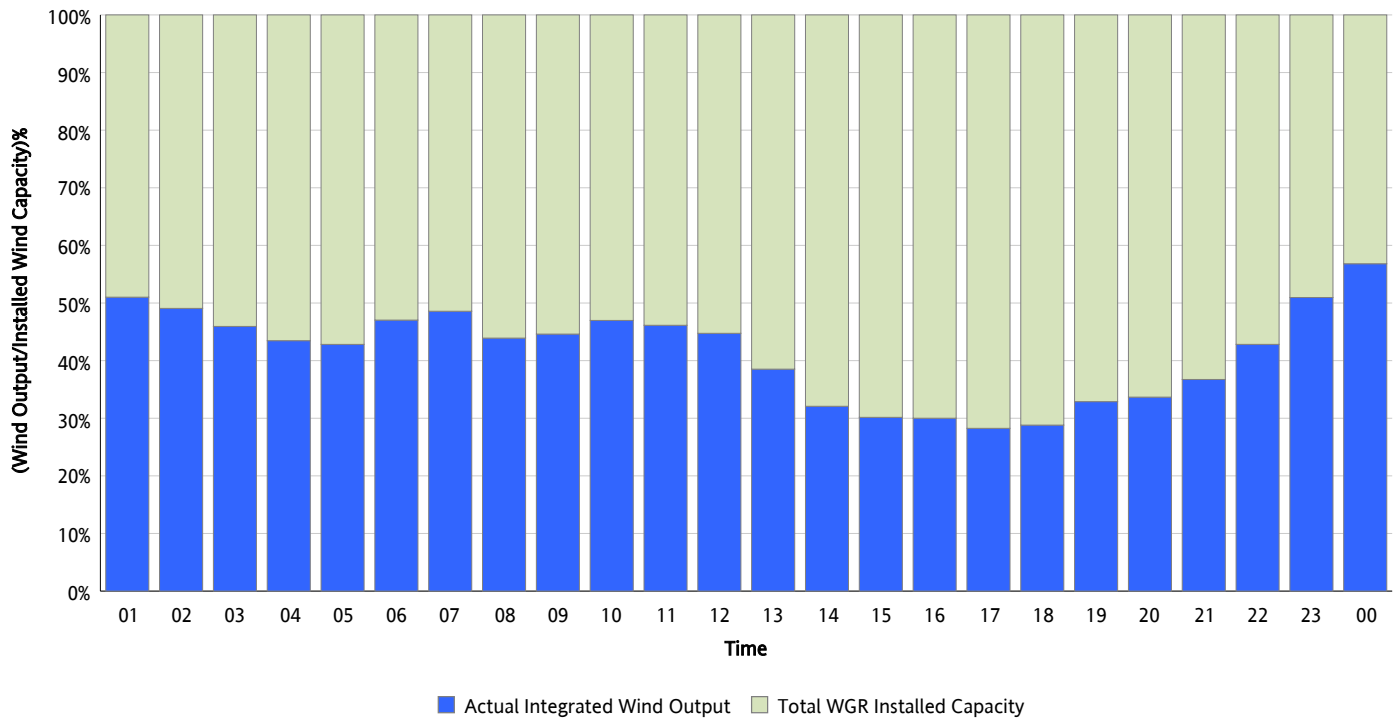
Hourly Average Actual Load vs. Actual Wind Output
08/23/2012



* Wind Record and Wind Max represent instantaneous values and the rest of the values are integrated over the hour

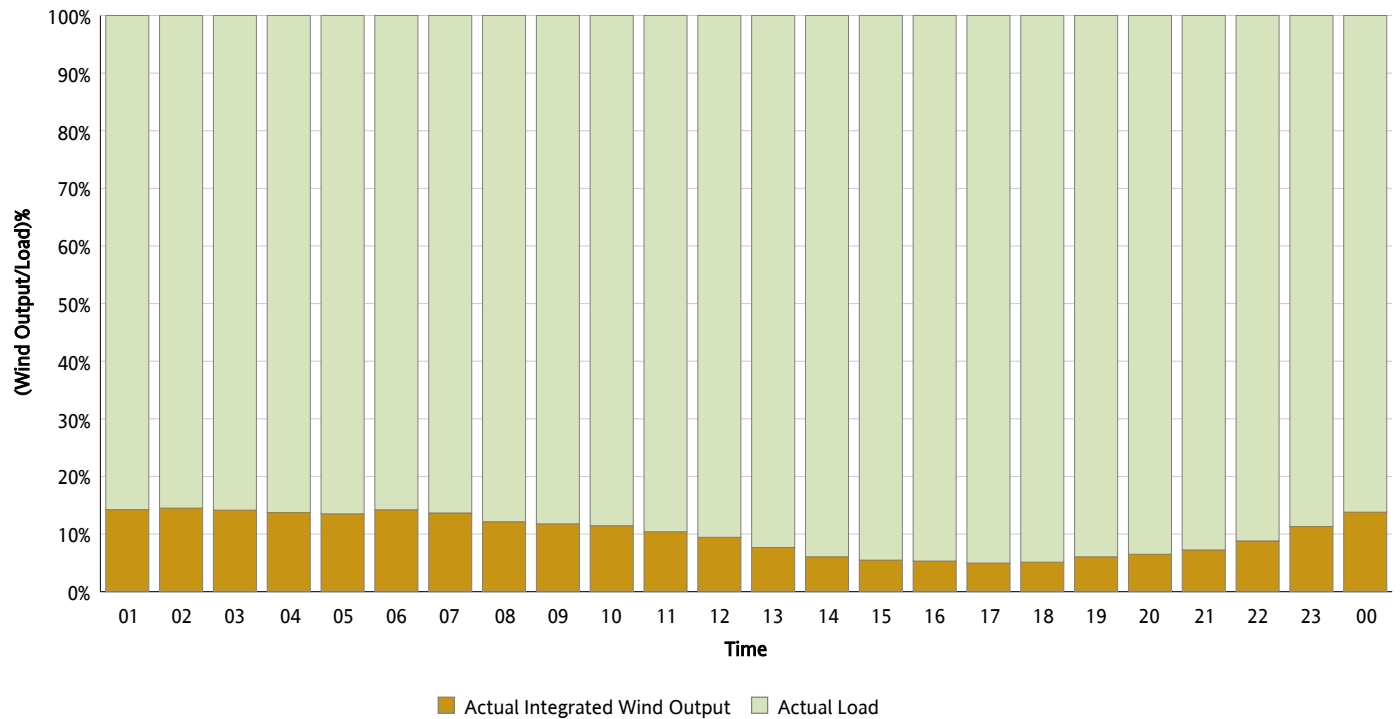
Actual Wind Output as a Percentage of the Total Installed Wind Capacity

08/23/2012



Actual Wind Output as a Percentage of the ERCOT Load

08/23/2012



ERCOT Load vs. Actual Wind Output

08/16/2012 - 08/23/2012

